

RE-CREATION SPACE

YOUTH-GENERATED PLACE MAKING

Commissioned by The Orchards Project / Spark Gallery NPC

April – June 2019

Funded by LOTTO.

Orchards Precinct Context

3D Aerial View - South



The Trinity Session production and operations base at The Orchards Project / Spark Gallery, Orchards, Johannesburg 2017 – pres.

RE-CREATION SPACES – multi-disciplinary team and facilitators

The Orchards Project

<http://www.orchardsproject.org.za>

The main thrust of the Orchards Project /Spark Gallery/ Art Complex is to create a self-sustaining composite of income producing entrepreneur based projects(EBP) that are self-reliant.

These EBP's will form public/private partnerships (PPP) to drive skills-trained employment in the small business community. Training in basic business practice is necessary to empower people to be able to quote competitively and market their newly acquired skills. In light of the planned expansion of the premises to accommodate a more comprehensive and user friendly facility our present funding from LOTTO allows us to invest in a capital development applicable to the present needs.



Play Africa and Trinity Session Representatives

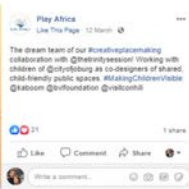


Image: Play Africa Facebook Page



Sarah Treherne
The Trinity Session



Zimvo Makaula
Z²



Mantala Nkoatse
The Trinity Session



Mpho Tsele
Play Africa



Futhi Mbongwe
Play Africa



Tebogo Dube
Play Africa



Philiso Sebole
Play Africa



Khanyisa Tofile
InTouch Youth Justice

Dream Careers, 9 April

To get the participants into the head-space of dreams and aspirations, as well as to introduce them to one another and to the facilitators, the children were asked to choose their dream careers and they got to dress up.



Site Walkabout, 9 April

As shown above, 6 sites were identified for the participants to analyse. The children were split into 5 groups of four and given the task of analysing each site using a simplified adaptation of the SWOT analysis technique – strengths, weaknesses, opportunities, threats; renamed as:



Site 1: The Picnic Spot



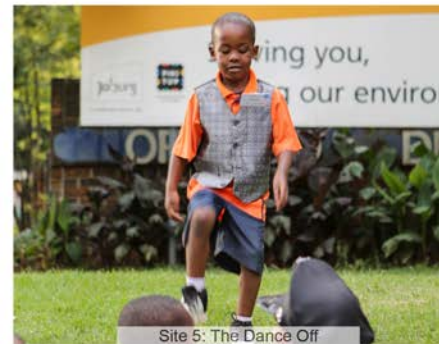
Site 2: Gambler's Corner



Site 3: The Skinny Island



Site 4: The Forest



Site 5: The Dance Off



Site 6: The Basketball Court

Site Analysis, 10 April



As shown above, 6 sites were identified for the participants to analyse. The children were split into 5 groups of four and given the task of analysing each site using a simplified adaptation of the SWOT analysis technique – strengths, weaknesses, opportunities, threats; renamed as:

😊 Good
 😞 Bad
 ✅ Can be fixed
 ❌ Can't be fixed



Site 4 - The Forest

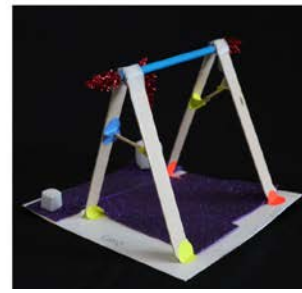
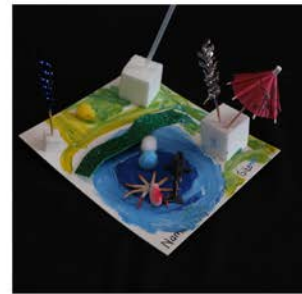
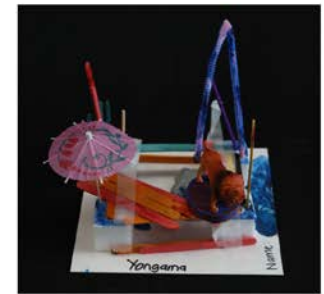
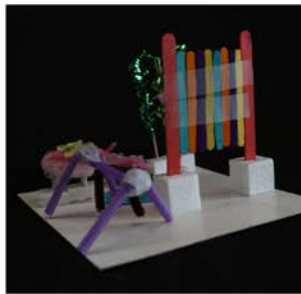
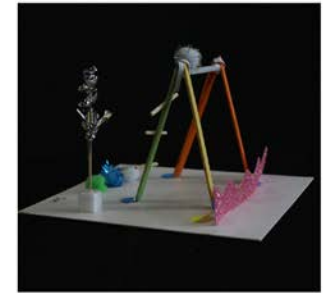
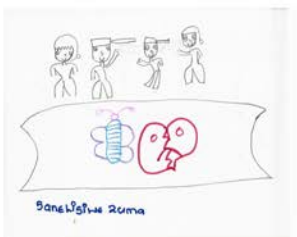
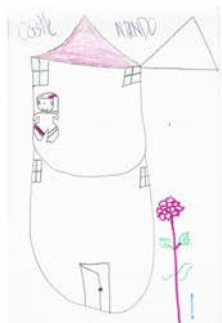
Team	Site Name	😊	😞	✅	❌
The Fixer Kids	Popcorn	1		1	
The Super 4	Eighty Spot	1	1	1	
Brilliant Kidz	Dinosaur Toes		2	1	3
Team Rocket Go	Jungle Mago Place	1		1	
Fire Fighters	Castle	1			
Total votes:		14	4	3	4

GOOD	BAD	CAN BE FIXED	CAN'T BE FIXED
Can climb trees	River is dirty	treehouse	
relaxing	Smelly rubbish	More slides and swings	
Able to jump and climb	Polluted, broken bottles	Put a gate and security guard	
Play soccer	Small space	Police should always be there	
Run around the trees playing hide and seek	Can't play soccer	Can put or design smiling pools	
Enough space	Too much space	Make a treehouse	
Play around the trees	Less trees	Police guards in trees	
	Broken swings then children don't have a place to play	Jungle with animals	
		Swings should be fixed	

Notes from site 4:

- Precious "I can't work at that place. I like this place because it is beautiful."
- Yongama "No trees, soccer poles. Zori Stadium. No digging, no fence."
- Itumeleng "Yes I can dance."
- Sanelisiwe "A little bit scary."
- Katlego "I like the space. I do like to put airport and a park."
- Siyanda "I can is car."
- Siya "I wonder if I can make playground for 8000 that will take me a week."
- Mpendulo "I don't like the hole in the grass on the ground because criminals will hide in it. I don't like the big tree in the park. I would like to build a police house in a tree house."





Storyline Development, 14 May

After Workshop 1 was concluded, elements of the children's drawings, models and other creations were cataloged and turned into potential plot narratives, characters, and settings for a new story that would be decided on by the children.

The second workshop took place in the week following the National Elections on the 8th of May; taking advantage of this, a storyline "ballot" was compiled allowing to democratically vote for their preferred settings, themes, good guys and bad guys, etc.

The concept of voting, especially only being allowed one vote, was difficult to understand for a lot of the children, especially the younger ones.



Act 2 – Scene 1

IN THE JUNGLE. DRUMS ARE BEATING.

[BUILD AN ARK-PEACE WITH EVERY STEP: NU BAYA ROOTS]

Narrator The prince had never been into the Mighty Mago Jungle before. It was dark and scary but, in the distance, he heard singing.

FLION AND RHINOCORN ARE SITTING IN THEIR TREEHOUSE, SINGING TOGETHER AND THE BUTTERFLIES ARE SINGING AND DANCING ALONG. THE PRINCE FOLLOWS THE SOUND TO THE TREEHOUSE, PASSING THE BUTTERFLIES. PRINCE IS CRYING SOFTLY.

[MUSIC STOPS]

Rhinocorn Leodash, do you hear that? I think someone is crying.

Flion Let's go help them

FLION AND RHINO CORN LOOK DOWN AND SEE THE PRINCE SITTING UNDER THE TREEHOUSE.

Rhinocorn Hello! Do you want to be our friend? I am Anna.

Flion And I am Leodash. Come into our treehouse.

Prince I'm Philip, just Philip. And I would like to be your friend. I don't have any friends anymore.

Narrator Prince Phillip lived happily with his new friends, and they sang many songs together. He found a new home in the forest, but he never forgot his sister.

Act 2 – Scene 2

IN THE CASTLE

Narrator Over time, the kingdom became full of darkness as the Wise Woman's prophecy had predicted. One day, while the princess was plotting over her next evil scheme, the two sheep escaped the castle and went to find the prince.

PRINCESS IS ON HER THRONE, DRAWING ON A PAPER AND LAUGHING EVILLY. THE TWO SHEEP RUN FROM BEHIND THE CASTLE HEADING TOWARDS THE JUNGLE. THEY CROSS THE BRIDGE AND LOOK LOST.

Sheep 1 Beautiful butterflies, where can we find the prince?

BUTTERFLIES ALL SMILE AND POINT TO THE TREE HOUSE.

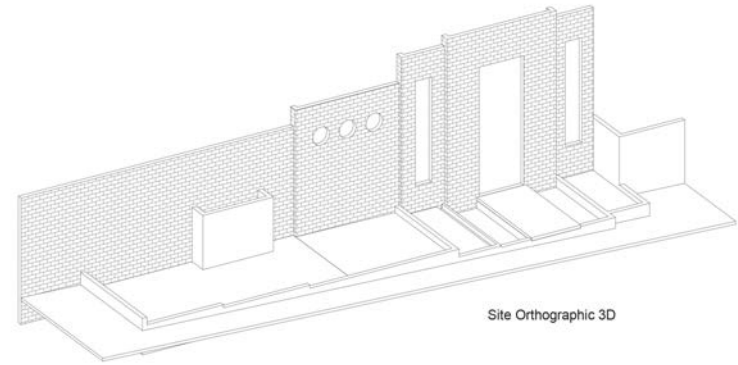
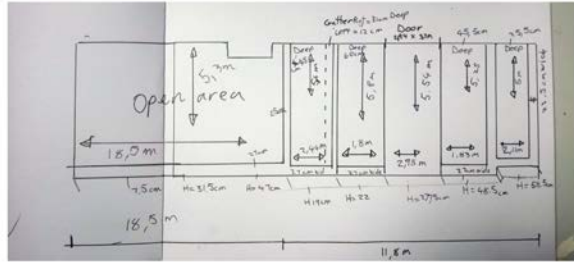
Sheep 2 Thank you Angel, Bumble and Sofia, the prettiest of all butterflies.

SHEEP GET TO THE TREEHOUSE AND LOOK UP.

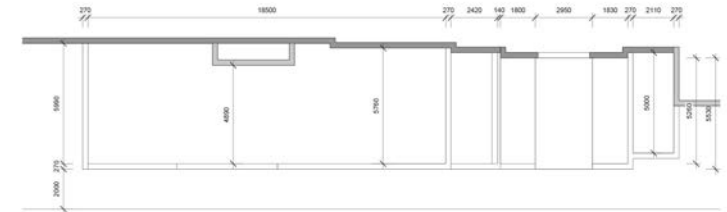
Both sheeps: Prince Philip, we need your help. You are our only hope.

Flion and Rhinocorn together :You're a PRINCE??

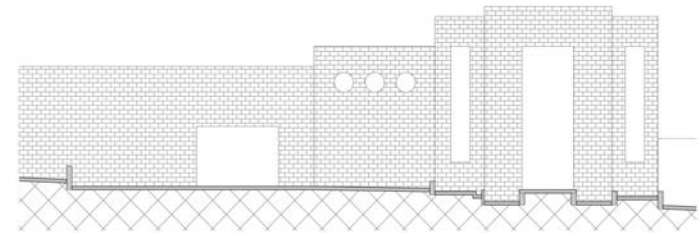
Narrator The sheep explained how bad it was at the castle and how Princess Starfire had become so mean to her people. At first the prince didn't want to help, but eventually the sheep and his friends the Flion and Rhinocorn convinced him to be brave and save the kingdom.



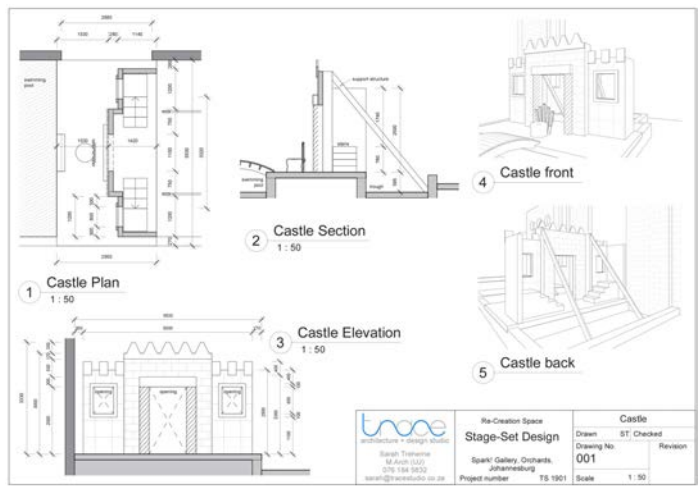
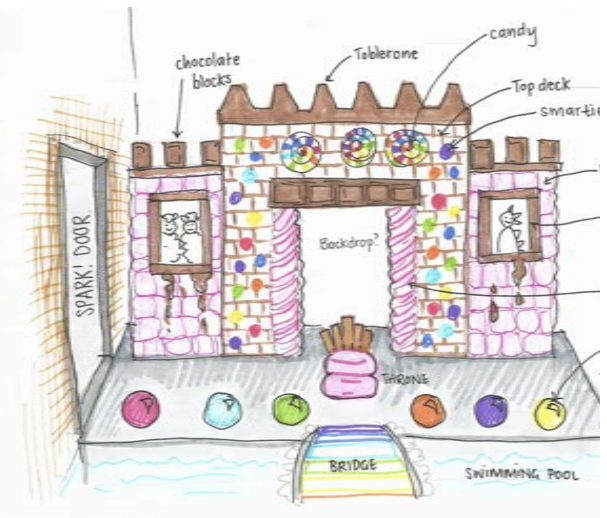
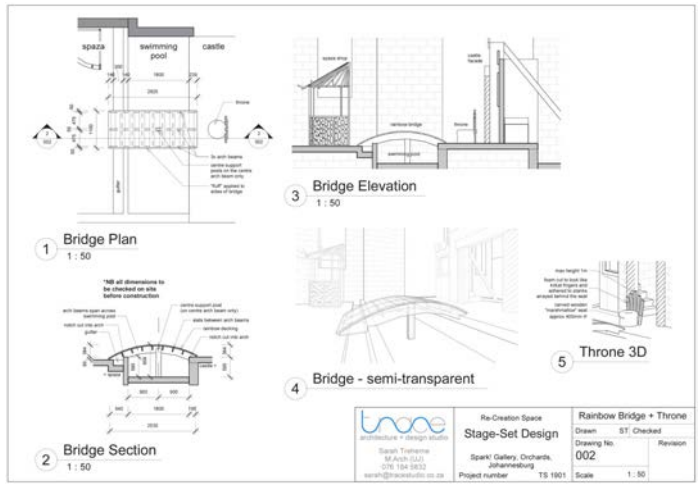
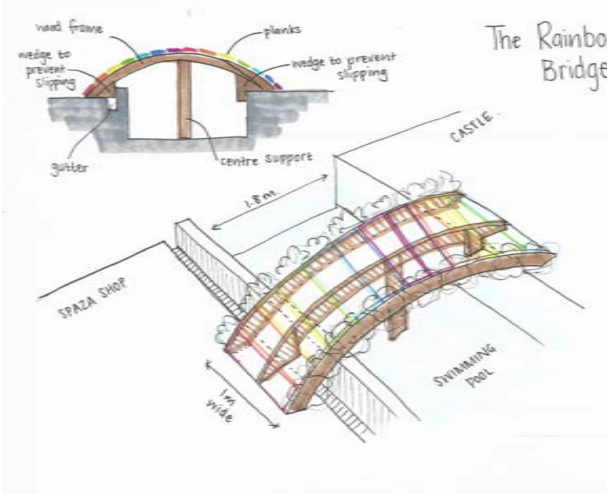
Site Orthographic 3D



Site Plan



Site Section





YONGAMA Makaula
FRANKIE THE NARRATOR



MOKETE MOKUNYANE
PEN THE PINK SHEEP



KATLEGO SEKELE
THE DRAGON DANGEROUS



HAYDEN THOABANA
LEODASH THE LION



Khanya Mkhize
ANGEL THE BUTTERFLY



FRECEUS NWAJIMU
SOFIA THE BUTTERFLY



GIFT BONGINKOSI SKWEYIYA
DINOSAUR RAAAARRR



ITUMELENG MOROPHI
Milo The Kudu



BOITUMELO MOROPHI
ANNA The RHINOCORN



Bafokeng RAPISE
Jack The Dinosaur

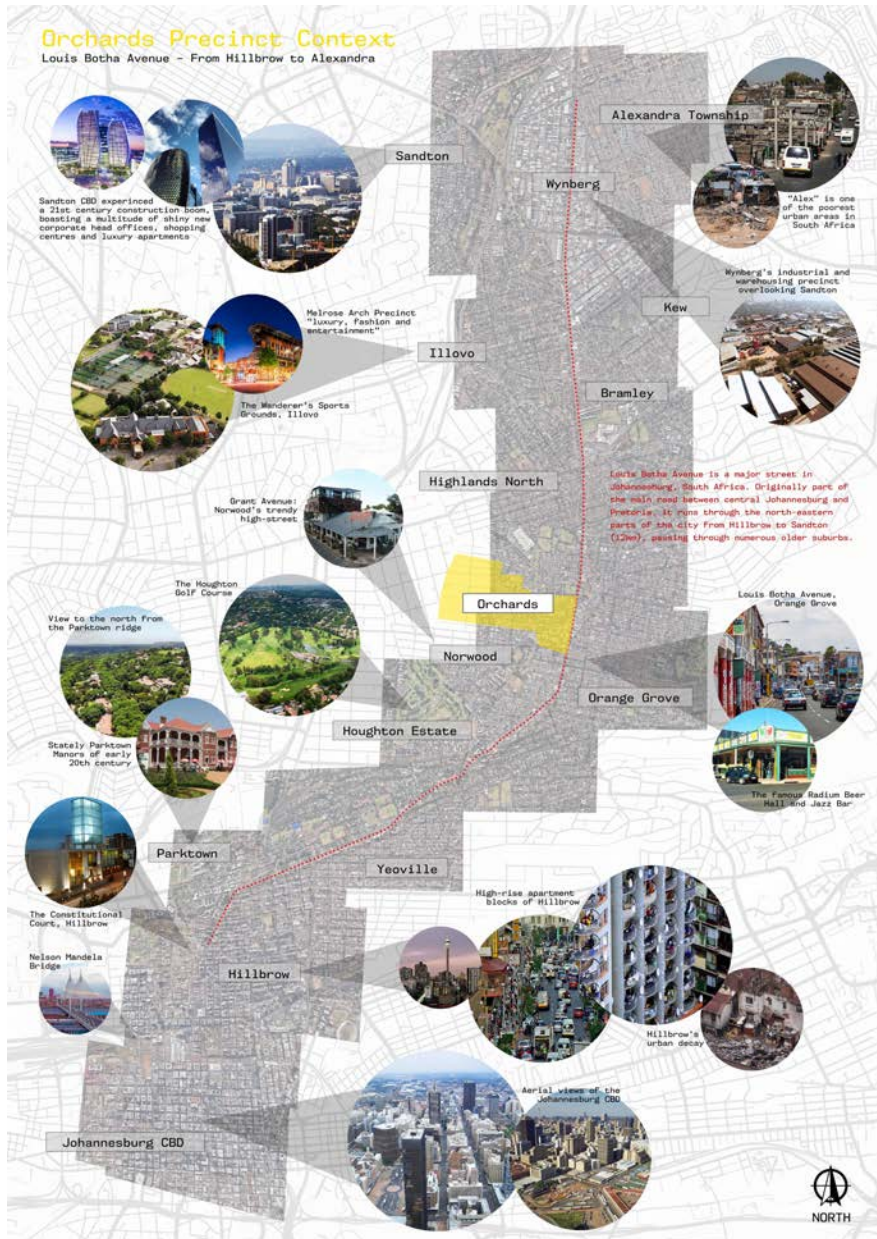


NTANDO PRECIOUS MSIMANG
PRINCE Phillip



SANDISIWE ZUMA
PRINCESS STARFIRE





Points of reflection:

Testing scalability: collaboration, audiences, users

Relevance: partnerships and participatory logics

Creative activation: imagining / making new urban form

Future funding: case study for upcycling

Expansive linear transit corridor: multiple histories, cultural politics and identities, future densities and economic growth

Events of the every day: potential for an urban festival.



Louis Botha Avenue - Transit Oriented Development Corridor

THANK YOU

[[]] the trinity session

www.thetrinitysession.com

Stephen Hobbs

sh@onair.co.za



the trinity session



RE-CREATION SPACE
YOUTH-GENERATED PLACE MAKING

